



260' DP-2 OSV DWT 3,700

GENIE LAB



DIMENSIONS & DOCUMENTATION

Length Overall:	260 Ft 79.2 M	Beam:	60 Ft 18.2 M	Depth:	19.5 Ft 5.9 M
GRT (ITC):	2,287	Net:	686	Max Draft:	16 Ft 4.8 M
Classification:	ABS	Flag:	US	Min Draft:	
Classification ID:	09195450	O. N.	1217807	Year Built:	2009
IMO:	9564310				
Notations:	⌘A1, Offshore Support Vessel, ⌘AMS, ⌘ACC, ⌘DPS-2				
Certifications	Subchapter L, SOLAS				

PERFORMANCE

Maximum Speed:	13.0 knots	Fuel Consumption:	240 gal/hr	908.5 l/hr
Cruising Speed:	11.0 knots	Fuel Consumption:	140 gal/hr	529.9 l/hr

MACHINERY

Main Engines:	2 x Caterpillar 3516B	Total Horsepower:	5,150 BHP
Main Propulsion:	2 x Azimuthing Z- Drives	Total Horsepower:	5,150 BHP
Main Generators:	3 x Caterpillar C-18	Total Rating:	1,275 kW
Bow Thrusters:	2 X Schottel SST3 VPP	Total Horsepower:	2,400 BHP
Power Generation	480V/60Hz		

CAPACITIES & DISCHARGE RATES

Deadweight:	3,698 Lt	3,757 Mt	Cargo Deck Area:	192 ft x 52 ft	9,984 Ft ²	
Deck Strength:	1,080 lbs/ft ²	5.0 t/m ²		58.5 M X 15.8 M	927 M ²	
Drill/Rig Water:	279,966 USG	1,057 M ³	Discharge Rate:	750 GPM	170 M ³ /hr	
Fuel:	275,091 USG	1,041 M ³	Discharge Rates:	750 GPM	170 M ³ /hr	
Liquid Mud:	10,580 Bbls	1,682 M ³	Discharge Rates:	1,000 GPM	227 M ³ /hr	
Dry Bulk:	12,355 ft ³	350 M ³	Discharge Rates:	1,000 ft ³ /hr	28 M ³ /hr	80 psi
Potable Water:	12,336 USG	46.7 M ³				
Methanol	1,442 Bbls	230 M ³	Discharge Rate:	250 GPM	57 M ³ /hr	
Fire Monitor:	2 x 2,600 GPM	2 x 591 M ³ /hr				

ELECTRONICS

2 X Kongsberg K-POS DP-2 Systems, Full Auto With Full and Mixed Joy Stick Mode, C-Joy, C-Wing, Alarm Printer, Multi Targets, 2 DGPS Receivers, 1 Radius 1000 Interrogator, 2 X 700 Transponders, 1 MK4.2 2000m.Fan Beam, 3 gyro compasses, 3 wind sensors, 2 MRU, Radars (2), GMDSS, VHF Radios(4), SSB Radios (2) Bridge Navigation Watch Alarm System

ACCOMMODATIONS

Accommodations for 27 persons in the following room configurations:

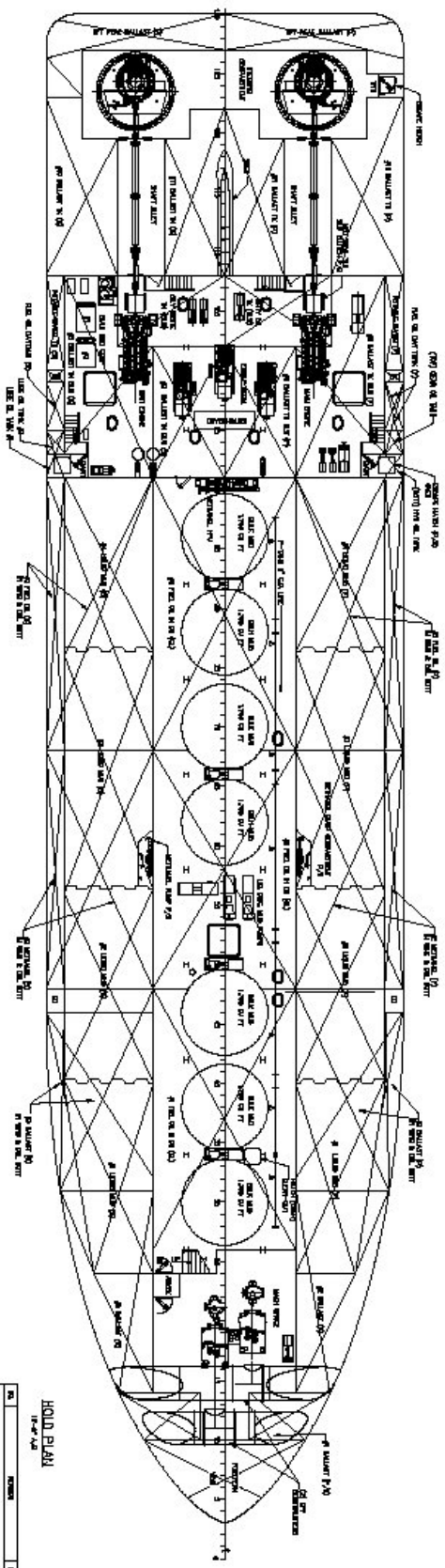
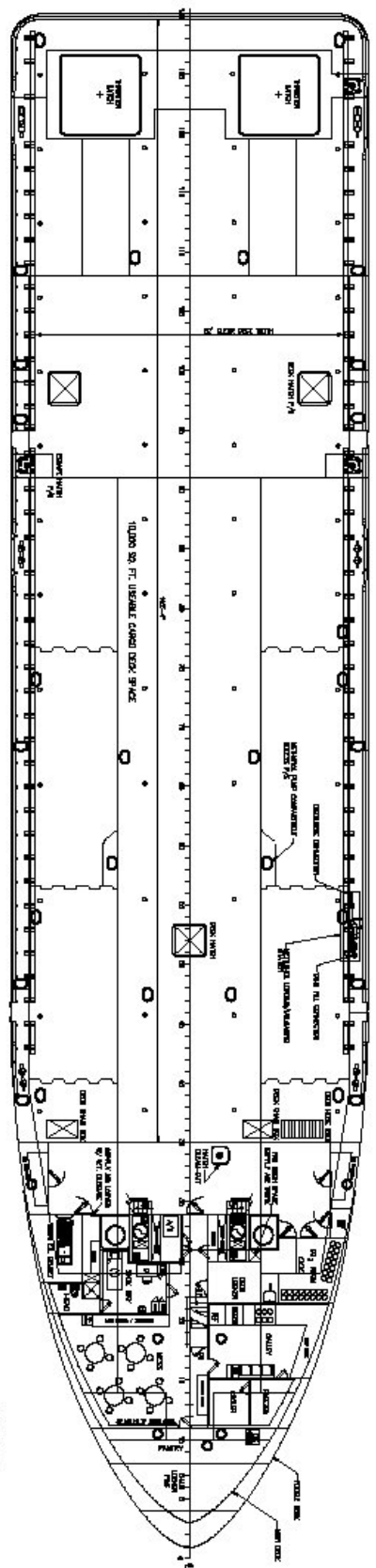
1 each 1 person room 2 each 2 person rooms 2 each 3 person rooms 4 each 4 person rooms

In addition, the vessel is also equipped with a room designed to serve as a 1 bunk infirmary

SPECIAL FEATURES

- 2 X ABS Approved Cargo Monitoring And Pumping Systems
 - Controls All Valves And Pumps While Also Monitoring All Tank Levels
- Computerized Vessel Stability Management
- Online and Satellite Communications
- Video Monitoring of Cargo Deck and Engine Room

NOTICE: The data contained herein is provided for convenience of reference to allow users to determine the suitability of the Company's equipment. The data may vary from the current condition of equipment which can only be determined by physical inspection. Company has exercised due diligence to insure that the data contained herein is reasonably accurate. However, Company does not warrant the accuracy or completeness of the data. In no event shall Company be liable for any damages whatsoever arising out of the use or inability to use the data contained herein.



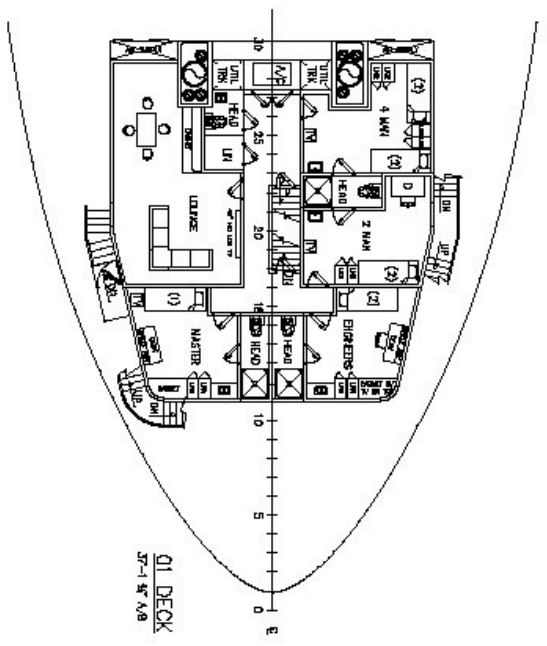
- PARTICULARS**
- 1. 1/2" PLATE
 - 2. 1/4" PLATE
 - 3. 1/8" PLATE
 - 4. 1/4" X 1/4" ANGLES
 - 5. 1/2" X 1/2" ANGLES
 - 6. 1/4" X 1/2" ANGLES
 - 7. 1/2" X 1/2" ANGLES
 - 8. 1/4" X 1/2" ANGLES
 - 9. 1/2" X 1/2" ANGLES
 - 10. 1/4" X 1/2" ANGLES
 - 11. 1/2" X 1/2" ANGLES
 - 12. 1/4" X 1/2" ANGLES
 - 13. 1/2" X 1/2" ANGLES
 - 14. 1/4" X 1/2" ANGLES
 - 15. 1/2" X 1/2" ANGLES
 - 16. 1/4" X 1/2" ANGLES
 - 17. 1/2" X 1/2" ANGLES
 - 18. 1/4" X 1/2" ANGLES
 - 19. 1/2" X 1/2" ANGLES
 - 20. 1/4" X 1/2" ANGLES
 - 21. 1/2" X 1/2" ANGLES
 - 22. 1/4" X 1/2" ANGLES
 - 23. 1/2" X 1/2" ANGLES
 - 24. 1/4" X 1/2" ANGLES
 - 25. 1/2" X 1/2" ANGLES
 - 26. 1/4" X 1/2" ANGLES
 - 27. 1/2" X 1/2" ANGLES
 - 28. 1/4" X 1/2" ANGLES
 - 29. 1/2" X 1/2" ANGLES
 - 30. 1/4" X 1/2" ANGLES
 - 31. 1/2" X 1/2" ANGLES
 - 32. 1/4" X 1/2" ANGLES
 - 33. 1/2" X 1/2" ANGLES
 - 34. 1/4" X 1/2" ANGLES
 - 35. 1/2" X 1/2" ANGLES
 - 36. 1/4" X 1/2" ANGLES
 - 37. 1/2" X 1/2" ANGLES
 - 38. 1/4" X 1/2" ANGLES
 - 39. 1/2" X 1/2" ANGLES
 - 40. 1/4" X 1/2" ANGLES
 - 41. 1/2" X 1/2" ANGLES
 - 42. 1/4" X 1/2" ANGLES
 - 43. 1/2" X 1/2" ANGLES
 - 44. 1/4" X 1/2" ANGLES
 - 45. 1/2" X 1/2" ANGLES
 - 46. 1/4" X 1/2" ANGLES
 - 47. 1/2" X 1/2" ANGLES
 - 48. 1/4" X 1/2" ANGLES
 - 49. 1/2" X 1/2" ANGLES
 - 50. 1/4" X 1/2" ANGLES
 - 51. 1/2" X 1/2" ANGLES
 - 52. 1/4" X 1/2" ANGLES
 - 53. 1/2" X 1/2" ANGLES
 - 54. 1/4" X 1/2" ANGLES
 - 55. 1/2" X 1/2" ANGLES
 - 56. 1/4" X 1/2" ANGLES
 - 57. 1/2" X 1/2" ANGLES
 - 58. 1/4" X 1/2" ANGLES
 - 59. 1/2" X 1/2" ANGLES
 - 60. 1/4" X 1/2" ANGLES
 - 61. 1/2" X 1/2" ANGLES
 - 62. 1/4" X 1/2" ANGLES
 - 63. 1/2" X 1/2" ANGLES
 - 64. 1/4" X 1/2" ANGLES
 - 65. 1/2" X 1/2" ANGLES
 - 66. 1/4" X 1/2" ANGLES
 - 67. 1/2" X 1/2" ANGLES
 - 68. 1/4" X 1/2" ANGLES
 - 69. 1/2" X 1/2" ANGLES
 - 70. 1/4" X 1/2" ANGLES
 - 71. 1/2" X 1/2" ANGLES
 - 72. 1/4" X 1/2" ANGLES
 - 73. 1/2" X 1/2" ANGLES
 - 74. 1/4" X 1/2" ANGLES
 - 75. 1/2" X 1/2" ANGLES
 - 76. 1/4" X 1/2" ANGLES
 - 77. 1/2" X 1/2" ANGLES
 - 78. 1/4" X 1/2" ANGLES
 - 79. 1/2" X 1/2" ANGLES
 - 80. 1/4" X 1/2" ANGLES
 - 81. 1/2" X 1/2" ANGLES
 - 82. 1/4" X 1/2" ANGLES
 - 83. 1/2" X 1/2" ANGLES
 - 84. 1/4" X 1/2" ANGLES
 - 85. 1/2" X 1/2" ANGLES
 - 86. 1/4" X 1/2" ANGLES
 - 87. 1/2" X 1/2" ANGLES
 - 88. 1/4" X 1/2" ANGLES
 - 89. 1/2" X 1/2" ANGLES
 - 90. 1/4" X 1/2" ANGLES
 - 91. 1/2" X 1/2" ANGLES
 - 92. 1/4" X 1/2" ANGLES
 - 93. 1/2" X 1/2" ANGLES
 - 94. 1/4" X 1/2" ANGLES
 - 95. 1/2" X 1/2" ANGLES
 - 96. 1/4" X 1/2" ANGLES
 - 97. 1/2" X 1/2" ANGLES
 - 98. 1/4" X 1/2" ANGLES
 - 99. 1/2" X 1/2" ANGLES
 - 100. 1/4" X 1/2" ANGLES

NO.	DESCRIPTION	QTY.	UNIT	REMARKS
1	1/2" PLATE	100	SQ. FT.	
2	1/4" PLATE	200	SQ. FT.	
3	1/8" PLATE	50	SQ. FT.	
4	1/4" X 1/4" ANGLES	100	LINEAL FT.	
5	1/2" X 1/2" ANGLES	200	LINEAL FT.	
6	1/4" X 1/2" ANGLES	300	LINEAL FT.	
7	1/2" X 1/2" ANGLES	400	LINEAL FT.	
8	1/4" X 1/2" ANGLES	500	LINEAL FT.	
9	1/2" X 1/2" ANGLES	600	LINEAL FT.	
10	1/4" X 1/2" ANGLES	700	LINEAL FT.	
11	1/2" X 1/2" ANGLES	800	LINEAL FT.	
12	1/4" X 1/2" ANGLES	900	LINEAL FT.	
13	1/2" X 1/2" ANGLES	1000	LINEAL FT.	
14	1/4" X 1/2" ANGLES	1100	LINEAL FT.	
15	1/2" X 1/2" ANGLES	1200	LINEAL FT.	
16	1/4" X 1/2" ANGLES	1300	LINEAL FT.	
17	1/2" X 1/2" ANGLES	1400	LINEAL FT.	
18	1/4" X 1/2" ANGLES	1500	LINEAL FT.	
19	1/2" X 1/2" ANGLES	1600	LINEAL FT.	
20	1/4" X 1/2" ANGLES	1700	LINEAL FT.	
21	1/2" X 1/2" ANGLES	1800	LINEAL FT.	
22	1/4" X 1/2" ANGLES	1900	LINEAL FT.	
23	1/2" X 1/2" ANGLES	2000	LINEAL FT.	
24	1/4" X 1/2" ANGLES	2100	LINEAL FT.	
25	1/2" X 1/2" ANGLES	2200	LINEAL FT.	
26	1/4" X 1/2" ANGLES	2300	LINEAL FT.	
27	1/2" X 1/2" ANGLES	2400	LINEAL FT.	
28	1/4" X 1/2" ANGLES	2500	LINEAL FT.	
29	1/2" X 1/2" ANGLES	2600	LINEAL FT.	
30	1/4" X 1/2" ANGLES	2700	LINEAL FT.	
31	1/2" X 1/2" ANGLES	2800	LINEAL FT.	
32	1/4" X 1/2" ANGLES	2900	LINEAL FT.	
33	1/2" X 1/2" ANGLES	3000	LINEAL FT.	
34	1/4" X 1/2" ANGLES	3100	LINEAL FT.	
35	1/2" X 1/2" ANGLES	3200	LINEAL FT.	
36	1/4" X 1/2" ANGLES	3300	LINEAL FT.	
37	1/2" X 1/2" ANGLES	3400	LINEAL FT.	
38	1/4" X 1/2" ANGLES	3500	LINEAL FT.	
39	1/2" X 1/2" ANGLES	3600	LINEAL FT.	
40	1/4" X 1/2" ANGLES	3700	LINEAL FT.	
41	1/2" X 1/2" ANGLES	3800	LINEAL FT.	
42	1/4" X 1/2" ANGLES	3900	LINEAL FT.	
43	1/2" X 1/2" ANGLES	4000	LINEAL FT.	
44	1/4" X 1/2" ANGLES	4100	LINEAL FT.	
45	1/2" X 1/2" ANGLES	4200	LINEAL FT.	
46	1/4" X 1/2" ANGLES	4300	LINEAL FT.	
47	1/2" X 1/2" ANGLES	4400	LINEAL FT.	
48	1/4" X 1/2" ANGLES	4500	LINEAL FT.	
49	1/2" X 1/2" ANGLES	4600	LINEAL FT.	
50	1/4" X 1/2" ANGLES	4700	LINEAL FT.	
51	1/2" X 1/2" ANGLES	4800	LINEAL FT.	
52	1/4" X 1/2" ANGLES	4900	LINEAL FT.	
53	1/2" X 1/2" ANGLES	5000	LINEAL FT.	
54	1/4" X 1/2" ANGLES	5100	LINEAL FT.	
55	1/2" X 1/2" ANGLES	5200	LINEAL FT.	
56	1/4" X 1/2" ANGLES	5300	LINEAL FT.	
57	1/2" X 1/2" ANGLES	5400	LINEAL FT.	
58	1/4" X 1/2" ANGLES	5500	LINEAL FT.	
59	1/2" X 1/2" ANGLES	5600	LINEAL FT.	
60	1/4" X 1/2" ANGLES	5700	LINEAL FT.	
61	1/2" X 1/2" ANGLES	5800	LINEAL FT.	
62	1/4" X 1/2" ANGLES	5900	LINEAL FT.	
63	1/2" X 1/2" ANGLES	6000	LINEAL FT.	
64	1/4" X 1/2" ANGLES	6100	LINEAL FT.	
65	1/2" X 1/2" ANGLES	6200	LINEAL FT.	
66	1/4" X 1/2" ANGLES	6300	LINEAL FT.	
67	1/2" X 1/2" ANGLES	6400	LINEAL FT.	
68	1/4" X 1/2" ANGLES	6500	LINEAL FT.	
69	1/2" X 1/2" ANGLES	6600	LINEAL FT.	
70	1/4" X 1/2" ANGLES	6700	LINEAL FT.	
71	1/2" X 1/2" ANGLES	6800	LINEAL FT.	
72	1/4" X 1/2" ANGLES	6900	LINEAL FT.	
73	1/2" X 1/2" ANGLES	7000	LINEAL FT.	
74	1/4" X 1/2" ANGLES	7100	LINEAL FT.	
75	1/2" X 1/2" ANGLES	7200	LINEAL FT.	
76	1/4" X 1/2" ANGLES	7300	LINEAL FT.	
77	1/2" X 1/2" ANGLES	7400	LINEAL FT.	
78	1/4" X 1/2" ANGLES	7500	LINEAL FT.	
79	1/2" X 1/2" ANGLES	7600	LINEAL FT.	
80	1/4" X 1/2" ANGLES	7700	LINEAL FT.	
81	1/2" X 1/2" ANGLES	7800	LINEAL FT.	
82	1/4" X 1/2" ANGLES	7900	LINEAL FT.	
83	1/2" X 1/2" ANGLES	8000	LINEAL FT.	
84	1/4" X 1/2" ANGLES	8100	LINEAL FT.	
85	1/2" X 1/2" ANGLES	8200	LINEAL FT.	
86	1/4" X 1/2" ANGLES	8300	LINEAL FT.	
87	1/2" X 1/2" ANGLES	8400	LINEAL FT.	
88	1/4" X 1/2" ANGLES	8500	LINEAL FT.	
89	1/2" X 1/2" ANGLES	8600	LINEAL FT.	
90	1/4" X 1/2" ANGLES	8700	LINEAL FT.	
91	1/2" X 1/2" ANGLES	8800	LINEAL FT.	
92	1/4" X 1/2" ANGLES	8900	LINEAL FT.	
93	1/2" X 1/2" ANGLES	9000	LINEAL FT.	
94	1/4" X 1/2" ANGLES	9100	LINEAL FT.	
95	1/2" X 1/2" ANGLES	9200	LINEAL FT.	
96	1/4" X 1/2" ANGLES	9300	LINEAL FT.	
97	1/2" X 1/2" ANGLES	9400	LINEAL FT.	
98	1/4" X 1/2" ANGLES	9500	LINEAL FT.	
99	1/2" X 1/2" ANGLES	9600	LINEAL FT.	
100	1/4" X 1/2" ANGLES	9700	LINEAL FT.	

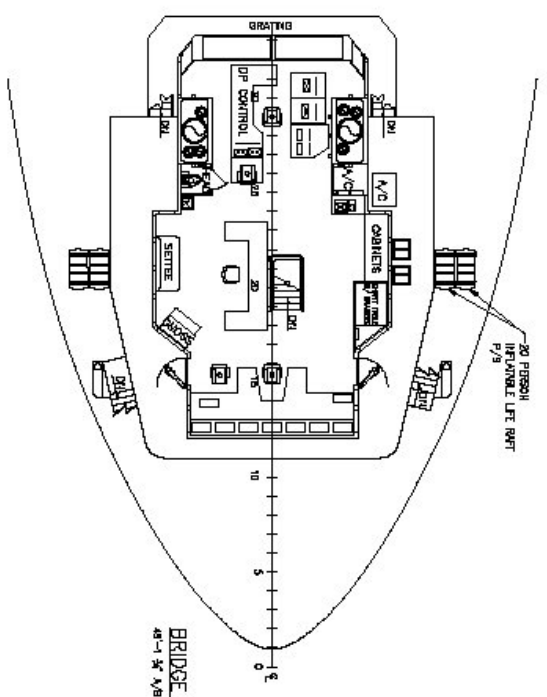
HOLD PLAN
11'-0" x 14'-0"

MAIN DECK & HOLD PLAN
EASTERN SHIPBUILDING GROUP, INC.

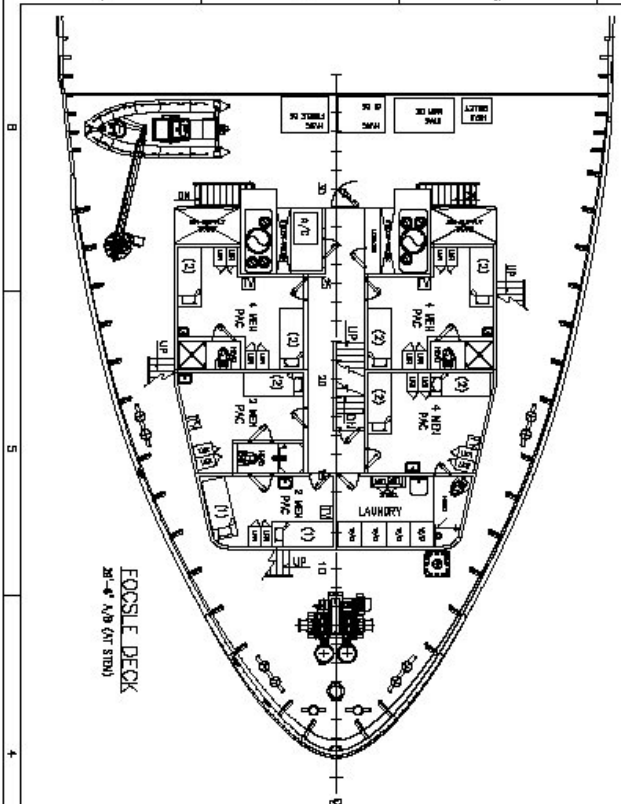
DESIGNED BY: [Redacted]
DRAWN BY: [Redacted]
CHECKED BY: [Redacted]
DATE: 1/20/01



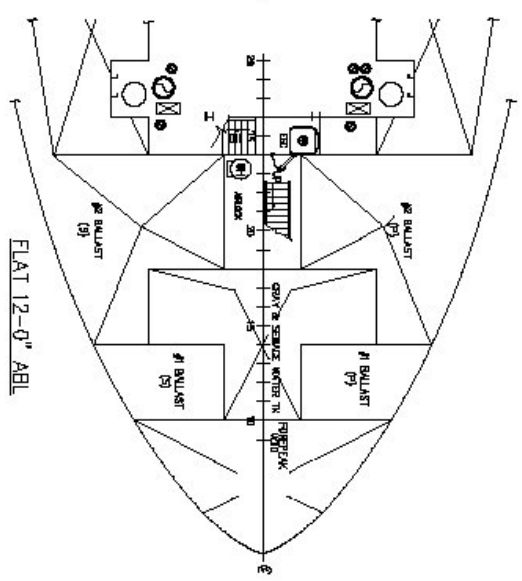
01 DECK
27-1 ST A/B



BRIDGE DECK
48-1 ST A/B



FOOSL E DECK
28-4 ST A/B (AT STBL)



FLAT 12-0\"/>

Z601 SUMMARY TABLE

ACCOMMODATIONS	26 PERSONS
STYVEBOARD	8
HEADS	10
LOBBIE	1
LAUNDRY AREA	1
SILENT	1
WATER AREA	1
SINK BAY	1

NO.	NAME	HT	WEIGHT	AGE
1
2
3
4
5
6
7
8
9
10
11
12
13
14
15
16
17
18
19
20
21
22
23
24
25
26
27
28
29
30
31
32
33
34
35
36
37
38
39
40
41
42
43
44
45
46
47
48
49
50

VESSEL NAME: LARSONE MARINE, LLC
 VESSEL NO.: 2807387-10-57-PSV 2-DIRVE
 VESSEL TYPE: FLATIRON SUPPLY VESSEL
 GENERAL ARRANGEMENT
 EASTERN SHIPBUILDING GROUP, INC.
 ADDRESS: 1000 S. 1000 E. ST. LOUIS, MO 63104
 PHONE: 314-861-9844 FAX: 314-861-9844
 DATE: 11/11/11