



260' DP-2 OSV DWT 3,700

HILDA LAB



DIMENSIONS & DOCUMENTATION

Length Overall:	260 Ft 79.2 M	Beam:	60 Ft 18.2 M	Depth:	19.5 Ft 5.9 M
GRT (ITC):	2,287	Net:	686	Max Draft:	16 Ft 4.8 M
Classification:	ABS	Flag:	US	Min Draft:	
Classification ID:	10195451	O. N.	1217808	Year Built:	2010
IMO:	9564322				
Notations:	⌘A1, Offshore Support Vessel, ⌘AMS, ⌘ACC, ⌘DPS-2				
Certifications	Subchapter L, SOLAS				

PERFORMANCE

Maximum Speed:	13.0 knots	Fuel Consumption:	240 gal/hr	908.5 l/hr
Cruising Speed:	11.0 knots	Fuel Consumption:	140 gal/hr	529.9 l/hr

MACHINERY

Main Engines:	2 x Caterpillar 3516B	Total Horsepower:	5,150 BHP
Main Propulsion:	2 x Azimuthing Z- Drives	Total Horsepower:	5,150 BHP
Main Generators:	3 x Caterpillar C-18	Total Rating:	1,275 kW
Bow Thrusters:	2 X Schottel SST3 VPP	Total Horsepower:	2,400 BHP
Power Generation	480V/60Hz		

CAPACITIES & DISCHARGE RATES

Deadweight:	3,698 Lt	3,757 Mt	Cargo Deck Area:	192 ft x 52 ft	9,984 Ft ²	
Deck Strength:	1,080 lbs/ft ²	5.0 t/m ²		58.5 M X 15.8 M	927 M ²	
Drill/Rig Water:	279,966 USG	1,057 M ³	Discharge Rate:	750 GPM	170 M ³ /hr	
Fuel:	275,091 USG	1,041 M ³	Discharge Rates:	750 GPM	170 M ³ /hr	
Liquid Mud:	10,580 Bbls	1,682 M ³	Discharge Rates:	1,000 GPM	227 M ³ /hr	
Dry Bulk:	12,355 ft ³	350 M ³	Discharge Rates:	1,000 ft ³ /hr	28 M ³ /hr	80 psi
Potable Water:	12,336 USG	46.7 M ³				
Methanol	1,442 Bbls	230 M ³	Discharge Rate:	250 GPM	57M ³ /hr	
Fire Monitor:	2 x 2,600 GPM	2 x 591 M ³ /hr				

ELECTRONICS

2 X Kongsberg K-POS DP-2 Systems, Full Auto With Full and Mixed Joy Stick Mode, C-Joy, C-Wing, Alarm Printer, Multi Targets, 2 DGPS Receivers, 1 Radius 1000 Interrogator, 2 X 700 Transponders, 1 MK4.2 2000m.Fan Beam, 3 gyro compasses, 3 wind sensors, 2 MRU, Radars (2), GMDSS, VHF Radios(4), SSB Radios (2) Bridge Navigation Watch Alarm System

ACCOMMODATIONS

Accommodations for 27 persons in the following room configurations:

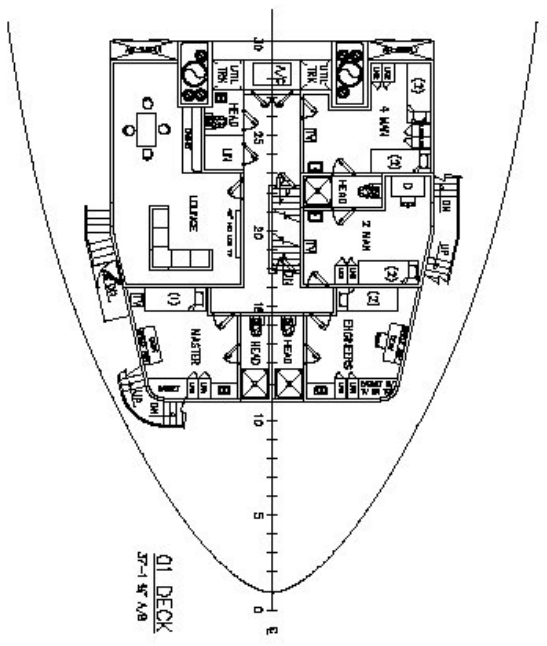
1 each 1 person room 2 each 2 person rooms 2 each 3 person rooms 4 each 4 person rooms

In addition, the vessel is also equipped with a room designed to serve as a 1 bunk infirmary

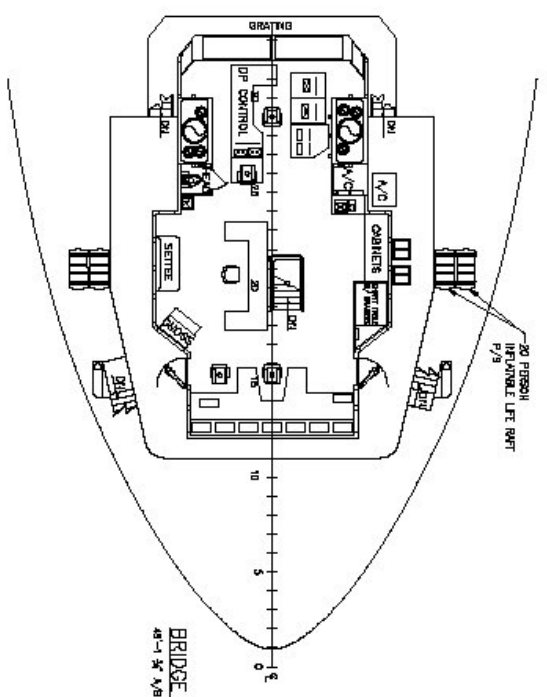
SPECIAL FEATURES

- 2 X ABS Approved Cargo Monitoring And Pumping Systems
 - Controls All Valves And Pumps While Also Monitoring All Tank Levels
- Computerized Vessel Stability Management
- Online and Satellite Communications
- Video Monitoring of Cargo Deck and Engine Room

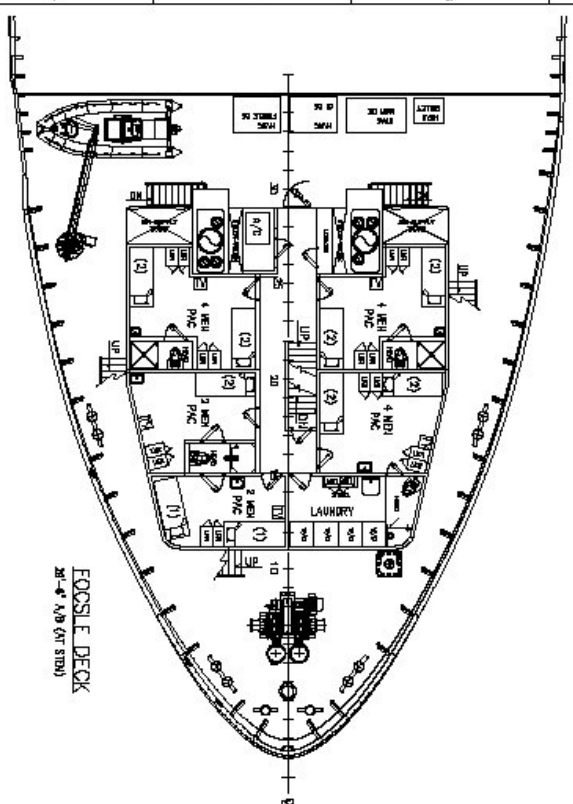
NOTICE: The data contained herein is provided for convenience of reference to allow users to determine the suitability of the Company's equipment. The data may vary from the current condition of equipment which can only be determined by physical inspection. Company has exercised due diligence to insure that the data contained herein is reasonably accurate. However, Company does not warrant the accuracy or completeness of the data. In no event shall Company be liable for any damages whatsoever arising out of the use or inability to use the data contained herein.



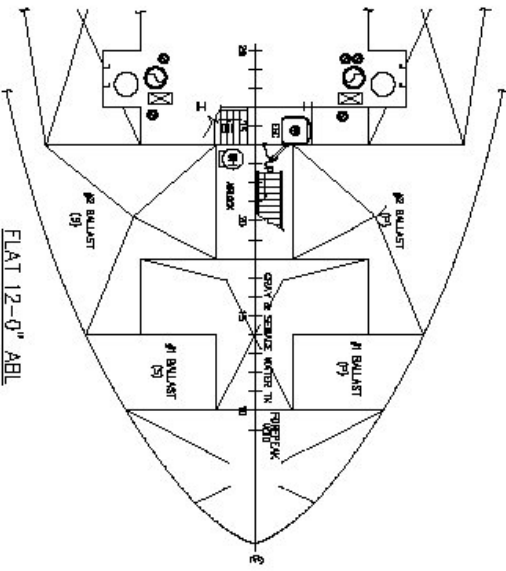
01 DECK
27-1 ST A/B



BRIDGE DECK
48-1 ST A/B



FOOSL E DECK
28-4 ST A/B (AT STBL)



FLAT 12-0\"/>

Z601 SUMMARY TABLE

ACCOMMODATIONS	26 PERSONS
STEERING	8
HEADS	10
LOUNGE	1
LAUNDRY AREA	1
SILENT	1
WATER AREA	1
SINK BAY	1

NO.	NAME	MR	DATE	DATE
1	YARDING MARINE, LLC			
2	Z601 28-4 ST A/B - 5\"/>			

GENERAL ARRANGEMENT
EASTERN SHIPBUILDING GROUP, INC.
10000151-984